

Polar DEWT Diesel Engine Cooling Water Treatment is specially developed to protect the machinery without the use of chemicals.

Clean water, clean surfaces and lowest possible oxygen content are essential to achieve trouble free operation.

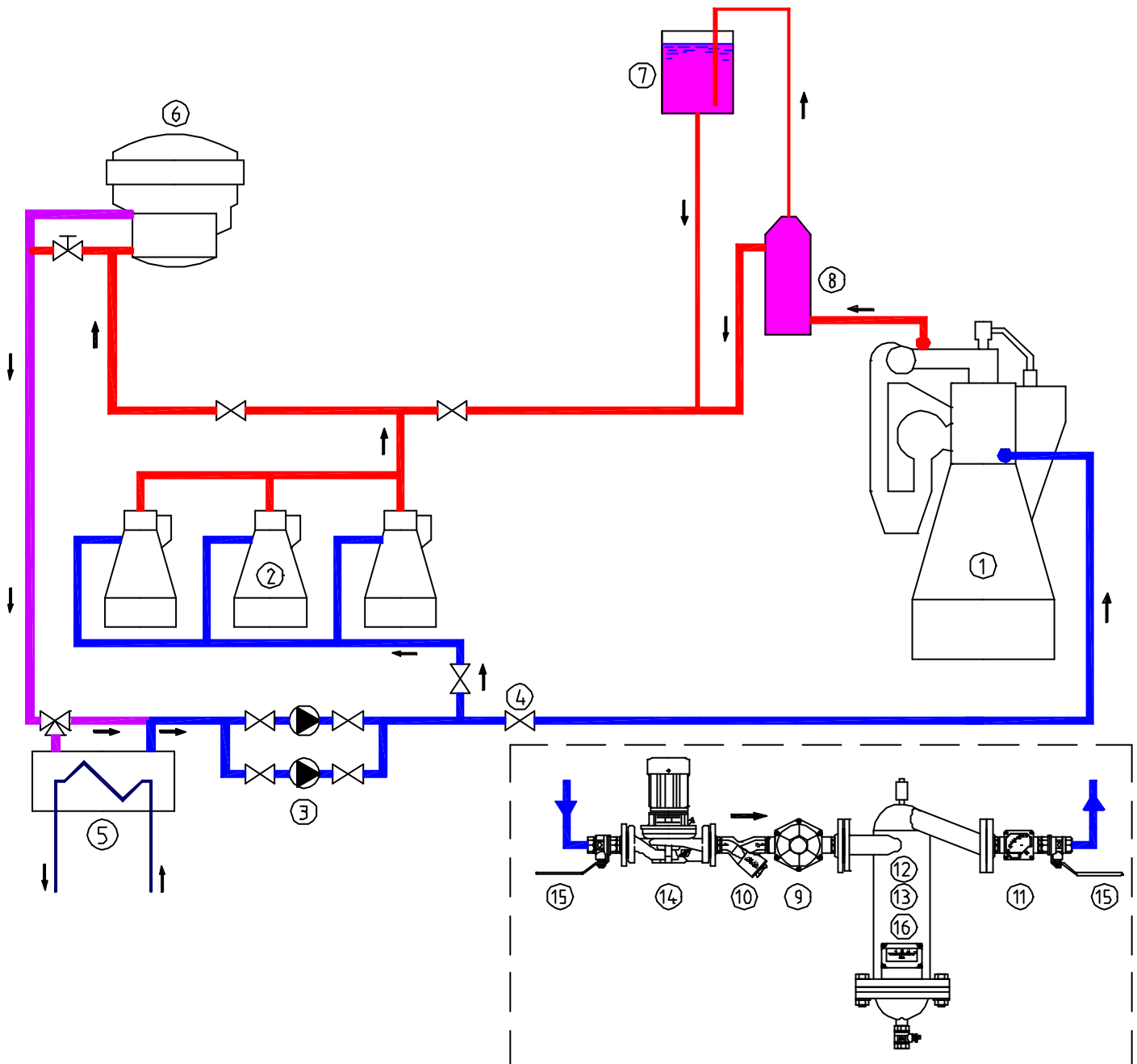
Polar DEWT package consists of:

- Polar dirt separator (item 12) separates all particles (down to 2-3 micron) continuously from the water with a total efficiency of more than 95%.
- Polar protection unit (item 13) automatically stabilises pH to the correct level between pH 9.0 to 9.8.
- Polar rust and scale dissolving unit (item 9) with sacrificial anode will continuously remove existing deposits of rust and scale. Removed dirt is caught in the dirt separator, (item 12).
- Polar magnetic strainer (item 10) will continuously attract fine magnetic particles from the water.
- The flow indicator (item 11) will continuously show the actual flow. Correct flow is vital for the efficiency of Polar.

The first hours after installation, the Polar particle separator must be drained frequently to dump / drain off the old dirt which is removed by the Polar DEWT installation.

Monthly report / log sheets to Polar marine div. for follow up.

POLAR DIESEL ENGINE WATER TREATMENT



ARRANGEMENT:

The Polar DEWT water treatment system can be installed in by pass at any pipe line in the LT / HT system that carries a minimum flow of 10 m³/h.

INDEX:

- | | |
|-----------------------------|---|
| 1. Main engine | 9. Polar rust and scale dissolving unit |
| 2. Auxillary engines | 10. Polar magnetic strainer |
| 3. Main circulation pump | 11. Polar flow indicator |
| 4. Shut off/Throttle valve | 12. Polar dirt separator |
| 5. Heat exchanger | 13. Polar protection unit |
| 6. Evaporator | 14. Circulation Pump(s) |
| 7. Header tank, atmospheric | 15. Shut off Valve |
| 8. De-airating tank | 16. Galvanometer |

